



Evolution, Development and Education of Logic and Sensibility

Date : Sunday & Monday, 7-8th March, 2010

Venue : North Building Hall, Mita Campus, Keio University, Tokyo

Sunday, 7th March

Evolution and Development of Logic and Sensibility

❖ Chair: Shigeru Watanabe (Keio University)

❖ Speakers:

- 1 **Gavin Hunt** (The University of Auckland) 9:00-10:00
How pandanus tool manufacture and use develops in free-living juvenile New Caledonian crows
- 2 **Hans-Joachim Bischof** (Universität Bielefeld) 10:00-11:00
Pair Formation in Birds - Based on Logic or on Sensibility?
- 3 **Franck Péron** (Université Paris Ouest Nanterre La Défense) 11:10-11:30
Social cognition in African grey parrots
- 4 **Discussion** 11:30-12:00

❖ Chair: Jun-ichi Yamamoto (Keio University)

❖ Speakers:

- 5 **Yasuyo Minagawa-Kawai** (Keio University) 13:00-14:00
Acquisition of linguistic logic in infants' native language
- 6 **Joseph McCleery** (University of Birmingham) 14:00-15:00
The neurodevelopmental basis of social and non-social functioning differences in children with autism
- 7 **Shigeru Kitazawa** (Juntendo University) 15:20-16:20
Toward a cure based on a better understanding of autism
- 8 **Kosuke Takahashi** (University of Tsukuba / Keio University) 16:20-16:40
Relational learning in children with autism
- 9 **Discussion** 16:40-17:10

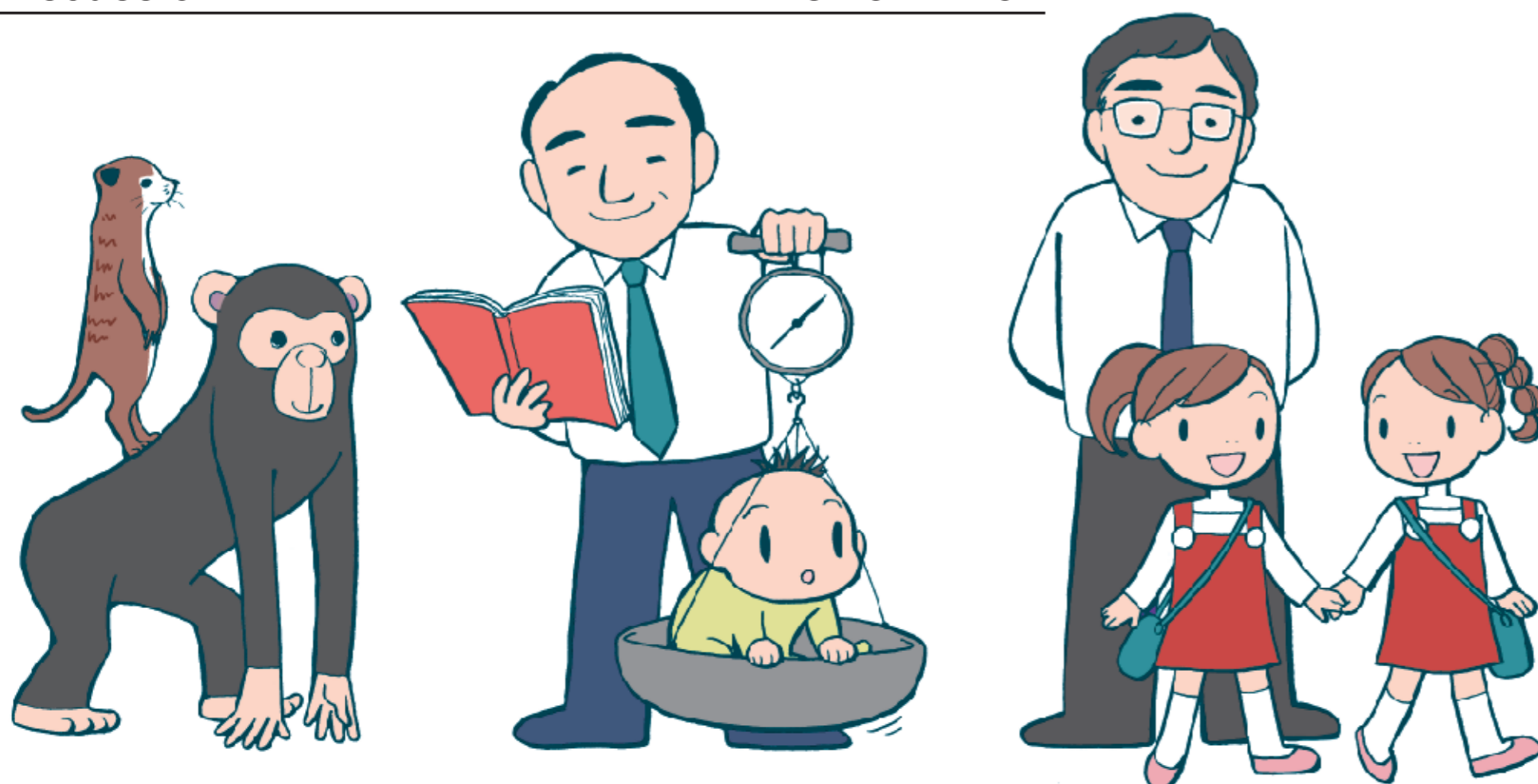
Monday, 8th March

Evolution, Logic and Sensibility of Education

❖ Chair: Juko Ando (Keio University)

❖ Speakers:

- 1 **Alex Thornton** (University of Cambridge) 9:00-10:00
The evolution of teaching
- 2 **Masaki Tomonaga** (Primate Research Institute, Kyoto University) 10:00-11:00
Social-cognitive bases for (non-) active teaching in chimpanzees
- 3 **John Sweller** (The University of New South Wales) 11:00-12:00
Biological evolution and human cognition: Logical, natural information processing systems that lead to instructional design principles
- 4 **Sidney Strauss** (Tel Aviv University) 13:00-14:00
Human and non-human teaching are not the same: A cautionary note against conflating them
- 5 **Mariko Hasegawa** (The Graduate University for Advanced Studies) 14:00-15:00
Sympathy, imagination and teaching: The origin and evolution of human education
- 6 **Kazushige Akagi** (Mie University) 15:15-15:45
Development of teaching behavior in children with autism and typical development
- 7 **Keisaku Tamada** (Keio University) 15:45-16:05
Evolution of manga and manga in education
- 8 **Discussion** 16:05-16:35



Organized by: Global COE Program
 "Centre for Advanced Research on Logic and Sensibility",
 Keio University
 Co-Organized by: Mita Philosophy Society
<http://www.carls.keio.ac.jp>
 INFORMATION
keiocarls@info.keio.ac.jp TEL.03-5427-1156