

Toward an Integration of Logic and Sensibility -from Neuroscience to Philosophy-

Date : 12th -14th September, 2011

Place : North Building Hall, Mita Campus, Keio University, Tokyo

Language : English (no interpretation provided)

Organizer : S. Watanabe (Keio University)

Please entry here ➔ <http://www.carls.keio.ac.jp/>

Logic and sensibility are two fundamental processes that play a crucial role in human judgment and decision-making. They are involved in a broad range of judgment along a continuum from a basic level for perception to more sophisticated higher levels, such as aesthetics, ethics, economics, and even politics. We will discuss the biological origins of logic and sensibility in judgment as well as their philosophical implications.

SPEAKERS

12th Sep.

9:30 Opening remark : Y. Anzai (Keio Univ., Japan)

9:50-11:50

Session1 Comparative study of Logic and Sensibility

Chair : S. Watanabe

L. Huber (University of Vienna, Austria)

H-J. Bischof (Bielefeld Univ., Germany)

S. Watanabe (Keio Univ., Japan)

13:00-15:00

Session2 Neural basis of Logic and Sensibility

Chair : S. Umeda

Z. Cho (Neuroscience Research Institute, Gachon University of Medicine and Science, Korea)

T. Shimizu (University of South Florida, USA)

S. Kojima (Keio Univ., Japan)

15:45-17:45

Session3 Development of Logic and Sensibility

Chairs : J. Ando and J. Yamamoto

M. Asada (Osaka Univ., Japan)

J. Ando (Keio Univ., Japan)

J. Yamamoto (Keio Univ., Japan)

13th Sep.

9:30-11:30

Session4 Logic and Sensibility in Art

Chair : K. Toyama

D. Lestel (École normale supérieure, France)

K. Toyama (Keio Univ., Japan)

H. Kawabata (Keio Univ., Japan)

13:00-15:00

Session5 Anthropological approaches to Logic and Sensibility

Chairs : K. Miyasaka and J. Kitanaka

A. Young (McGill Univ., Canada)

K. Miyasaka (Keio Univ., Japan)

J. Kitanaka (Keio Univ., Japan)

15:45-17:45

Session6 Language and Cognition in Logic and Sensibility

Chair : Y. Otsu

Y. Sharvit (University of Connecticut, USA)

Y. Itoh (Keio Univ., Japan)

Y. Otsu (Keio Univ., Japan)

14th Sep.

9:30-11:30

Session7 Philosophical approach to Logic and Sensibility

Chairs : N. Notomi and T. Iida

L. Brons (Nihon Univ., Japan)

T. Iida (Nihon Univ., Japan)

N. Notomi (Keio Univ., Japan)

13:00-15:00

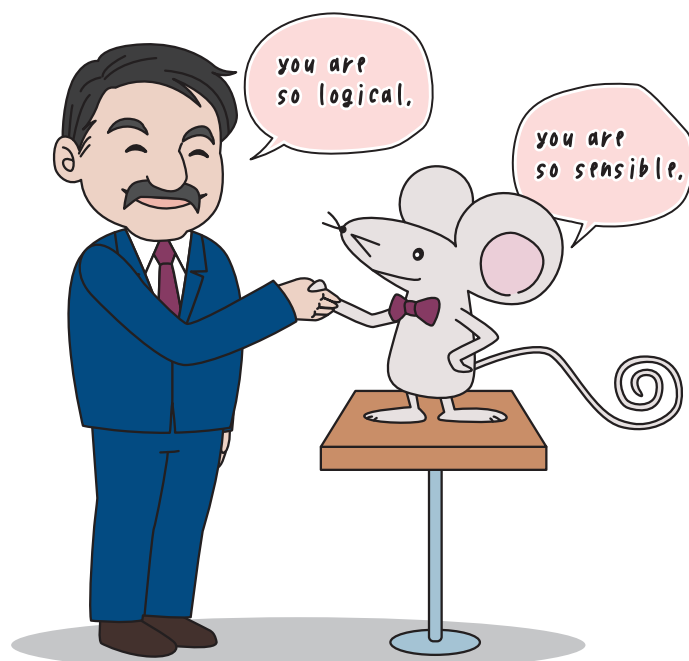
Session8 Reasoning in Logic and Sensibility

Chair: M. Okada

S-B. Gironde (École normale supérieure, France)

A. Shimojima (Doshisha Univ., Japan)

M. Okada (Keio Univ., Japan)



Keio University CARLS

(Centre for Advanced Research on Logic and Sensibility)

<http://www.carls.keio.ac.jp>

INFORMATION

keiocarls@info.keio.ac.jp TEL.03-5427-1156